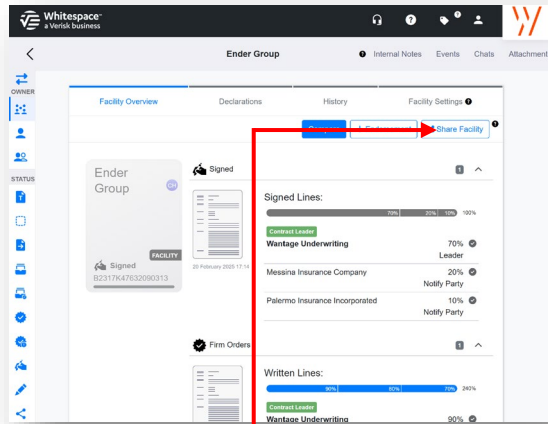


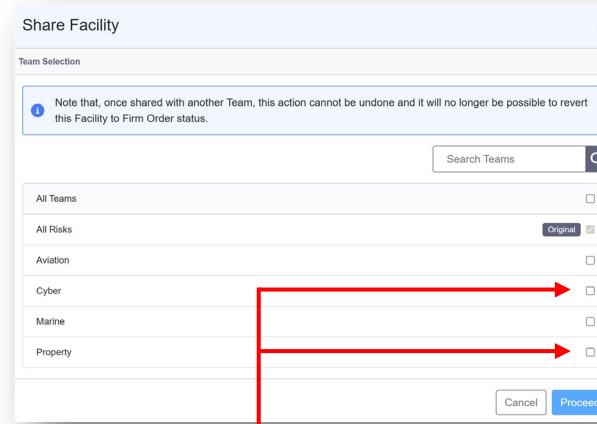
Sharing a Facility With Another Team

1.



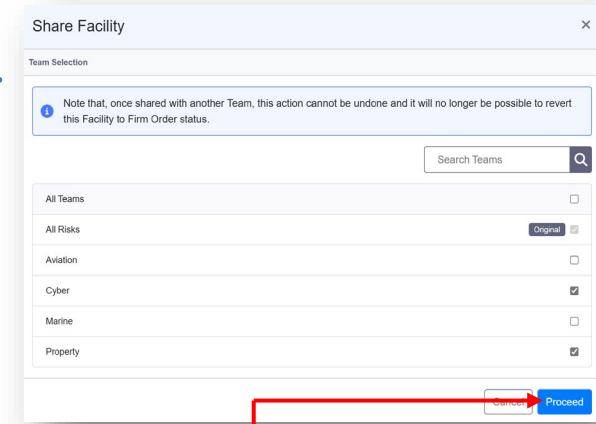
Users with the 'Share Facility' permission can share facilities and off-platform facilities with other user teams. Open the overview page of the facility and click 'Share Facility'.

2.



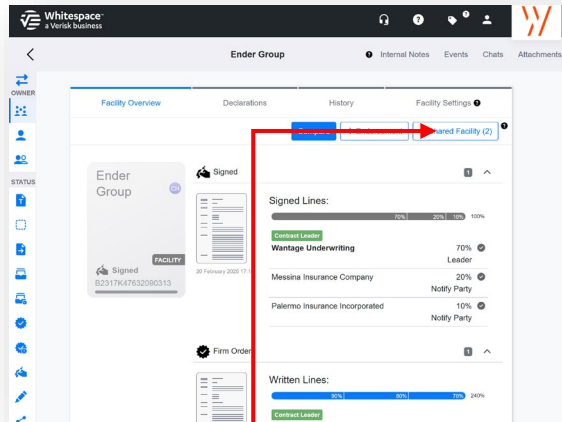
Click the required teams to select them.

3.



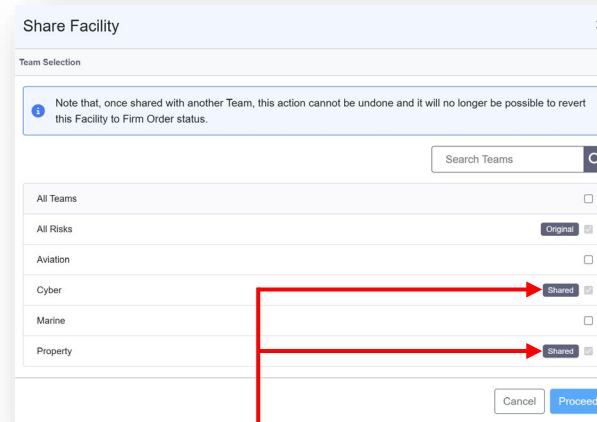
When you have selected the teams to share the master facility with, click 'Proceed'. Attachments and completed endorsements will be included.

4.



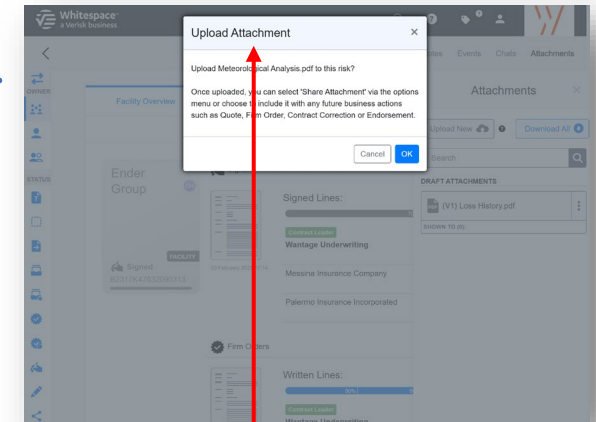
The master facility's overview 'Shared Facility' button shows how many teams it is shared with. Click to share with more teams.

5.



The 'Share Facility' window clearly shows the original master facility's team as well as the shared teams.

6.



Attachments to a master facility are not copied to the shared facilities automatically. They can be shared later, when completing an endorsement on the master facility.